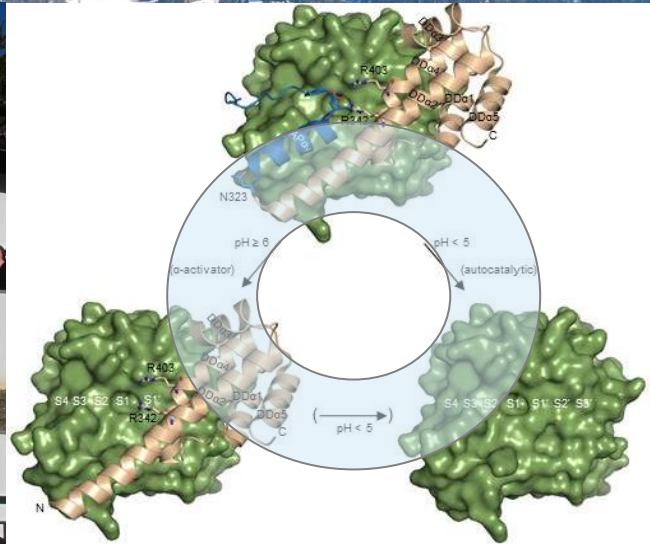


# XXX<sup>th</sup> Winter School on Proteinases and Their Inhibitors



Tiers am Rosengarten  
February 27 – March 3, 2013



30<sup>th</sup> Winter School on Proteinases and Their Inhibitors  
in Tiers (Italy)  
February 27 – March 3, 2013

**Organizing Committee**

Klaudia Brix (Bremen)

Christian Sommerhoff (Munich)

Boris Turk (Ljubljana)

Hans Brandstetter (Salzburg)

**Editors**

Michaela Lassacher & Hans Brandstetter

Dept. Molecular Biology

University of Salzburg

[www.uni-salzburg.at/tiers](http://www.uni-salzburg.at/tiers)

**Supported by**

- Jena Bioscience
- Stricker Laborhandel
- University of Salzburg



## Table of Contents

GENERAL INSTRUCTIONS .....	7
Accommodation .....	7
Scientific sessions .....	7
Social events .....	7
Disclaimer .....	7
PROGRAM.....	8
20:00 – 22:05 Wednesday evening session: The quest for protease substrates.....	8
09:00 – 10:30 Thursday morning session I: Endo/lysosomal proteases .....	9
11:00 – 12:30 Thursday morning session II: Endo/lysosomal proteases .....	9
14:30 – 15:55 Thursday afternoon session I: Cancer biology.....	10
16:25 – 18:00 Thursday afternoon session II: Signaling and cancer biology .....	10
09:00 – 10:30 Friday morning session I: Metalloproteases .....	11
11:00 – 12:30 Friday morning session II: Alzheimer .....	11
14:30 – 16:10 Friday afternoon session I: Immune defense proteases.....	12
16:35 – 18:00 Friday afternoon session II: Blood proteases .....	12
09:00 – 10:30 Saturday morning session I: New frontiers in protease research .....	13
11:00 – 12:30 Saturday morning session II: Ever new stories about cysteine proteases .....	13
14:30 – 17:00 Saturday afternoon session: Building your career in science.....	14
LIST OF PARTICIPANTS – THE WINTER SCHOOL FACEBOOK.....	16

## GENERAL INSTRUCTIONS

### Accommodation

All Winterschool participants are accommodated in one of the three hotels Rose, Paradies or Vajolet, all of which are in five minutes walking distance. If you are unsure, please ask at the registration of Hotel Paradies. They have a list of all participants and are happy to help you.

While accommodation and meals including mineral water are covered, any extras are not:

- Please pay all drinks (except mineral water) directly after the meal.
- Please do not forget to pay your good night-drinks before you leave for sleeping.
- Please do not forget to pay all your extras (personal orders, ...) at your hotel before departure.

If you want to rent ski equipment, please ask at the Hotel Paradies.

### Scientific sessions

All lectures will take place at the *Haus der Dorfgemeinde* (City Hall). It is in 5-10 min walking distance from the hotels.

### Social events

- Thursday evening, City Hall: *Night session with live band*
- Friday evening, Paradies: *Meet and Make Friends in Proteolysis Research*
- Saturday evening, Castle Prösels *Gala Dinner & Farewell*

### Disclaimer

*To enable and foster the unrestrained presentation and discussion of new results and ongoing research, every Winter School attendee must respect that all contents presented and discussed at the Winter School are private communications, not allowed for public use. Consequently, recording of lectures or photographing/copying of slides or presentations is prohibited.*

## PROGRAM

When preparing your talk, please make sure to reserve five minutes for discussion.

WEDNESDAY, FEBRUARY 27

**18:00** Dinner

### **20:00 – 22:05 Wednesday evening session: The quest for protease substrates**

20:00 – 20:05 Opening

20:05 – 20:15 **Ulrich AUF DEM KELLER, Christopher OVERALL**: What shall I eat and drink tonight? News and Views on substrate identification

20:15 – 20:30 Anna **BYZIA** (Wroclaw University of Technology) *Application of substrate library for identification and comparison of aminopeptidases activity in human, pig and rat kidneys.*

20:30 – 20:45 Marcin **POREBA** (Wroclaw University of Technology) *Initiator caspases can be distinguished by small molecule fluorogenic substrates containing unnatural amino acids.*

20:45 – 21:00 Pascal **SCHLAGE** (ETH Zürich) *A proteomics approach to unravel the function of matrix metalloproteinase 10 in wound healing.*

21:00 – 21:15 Christian **URSEL** (Universität Halle-Wittenberg) *In-vitro maturation of Drosophila melanogaster Spätzle protein with refolded Easter reveals a novel cleavage site within the prodomain*

21:15 – 21:30 Matej **VIZOVIŠEK** (Jožef Stefan Institute) *N- and C- Terminal Strategies for Discovery of Substrates of Cysteine Cathepsins*

21:30 – 22:00 Christopher **OVERALL** (University of British Columbia) *Searching for substrates: Keeping your eyes open in the moonlight*

22:00 – 22:05 Christopher **OVERALL**, Ulrich **AUF DEM KELLER**: Digest & wrap up



THURSDAY, FEBRUARY 28

**09:00 – 10:30 Thursday morning session I: Endo/lysosomal proteases**

**09:00 – 09:10 Klaudia BRIX & Thomas REINHECKEL: Thought-to-be Endo/Lysosomal Proteases**

09:10 – 09:25 Elfriede **DALL** (University of Salzburg) *Mechanistic studies of legumain-cystatin interactions reveal a prodomain-like mode of interaction by cystatin C*

09:25 – 09:40 Robert **VIDMAR** (Jožef Stefan Institute) *Proteomic characterization of asparaginyl endopeptidase and its possible role in cancer*

09:40 – 09:55 Mads H. **HAUGEN** (Oslo University Hospital) *Nuclear localized legumain in colorectal cancer.*

09:55 – 10:10 Tripti **TAMHANE** (Jacobs University Bremen) *Differential localization of cysteine cathepsins and nuclear variants in intestine epithelial and carcinoma cells.*

10:10 – 10:25 Elisabeth **NIMMERFALL** (BOKU Wien) *Cathepsin L is involved in the proteolytic processing and turnover of Drosophila melanogaster Cellular Repressor of EIA-stimulated Genes*

10:25 – 10:30 Klaudia **BRIX**, Thomas **REINHECKEL**: Wrap up

**10:30 – 11:00 COFFEE BREAK**

**11:00 – 12:30 Thursday morning session II: Endo/lysosomal proteases**

**11:00 – 11:10 Christoph PETERS & Melanie BÖRRIES: The Acid Test: Surviving and Dying in the Death Zone**

11:10 – 11:25 Florian C. **SIGLOCH** (Universität Freiburg) *Loss of the cysteine protease cathepsin B leads to alterations in the secretome and sheddome of human tumor cells.*

11:25 – 11:40 Alejandro **GOMEZ-AULI** (Universität Freiburg) *Influence of cathepsin B and cathepsin X/Z on secretome proteins in tumor-stroma interactions.*

11:40 – 11:55 Julia **WOLANSKI** (Universität Freiburg) *Translational control of human cathepsin L splice variants in tumour context*

11:55 – 12:10 Richard **WILKINSON** (Queen's University Belfast) *Reversible cathepsin S inhibitors as potential cancer therapeutics.*

12:10 – 12:25 Kathrin **SACHSE** (Uni Freiburg) *Non-proteolytic function of cathepsin Z in invasion of three-dimensional tumor cell spheroids*

12:25 – 12:30 Christoph **PETERS**, Melanie **BÖRRIES** Wrap up of the morning sessions

**12:45 LUNCH (Paradies, Rose)**

THURSDAY AFTERNOON SESSIONS: CANCER BIOLOGY

**14:30 – 15:55 Thursday afternoon session I: Cancer biology**

**14:30 – 14:40 Achim Krüger, Yoshifumi ITOH: In search for an anti-lock braking system:  
When inhibition promotes tumor growth ...**

14:40 – 14:55 Bastian **SEUBERT** (Klinikum rechts der Isar, TU München) *Pathological level of Tissue inhibitor of metalloproteinases (TIMP)-1 creates a dominant liver-specific pre-metastatic niche via SDF-1-mediated neutrophil recruitment*

14:55 – 15:10 Barbara **GRÜNWARD** (Klinikum rechts der Isar, TU München) *Tumor cell-derived Timp-1 promotes metastasis formation via inhibition of Adam-10*

15:10 – 15:25 Haissi **CUI** (Klinikum rechts der Isar, TU München) *The Tissue inhibitor of metalloproteinases-1 (TIMP-1) induces microRNA-210 via the HIF-1 pathway in a human lung carcinoma cell line*

15:25 – 15:40 James **BURROWS** (Queen's University Belfast) *Ras converting enzyme 1 has a novel isoform which is required for activity and is regulated by USP17*

15:40 – 15:55 Jakub **JAWORSKI** (Queen's University Belfast) *The deubiquitinating enzyme USP17 is required for EGFR endocytosis*

**15:55 – 16:25 COFFEE BREAK**

**16:25 – 18:00 Thursday afternoon session II: Signaling and cancer biology**

**16:25 – 16:35 Judith CLEMENTS, Viktor MAGDOLEN & Peter GOETTIG: Cell signaling and Cancer**

16:35 – 16:50 Eva **GROSS** (TU München) *Downregulation of serine protease HTRA1 is associated with poor survival in breast cancer*

16:50 – 17:05 Julia **DORN** (TU München) *Clinical value of kallikrein-related peptidase 7 (KLK7) in ovarian cancer*

17:05 – 17:20 Katherine **FALKOWSKI** (Jagiellonian University, Krakau) *Purification and initial characterization of recombinant human kallikrein 13*

17:20 – 17:35 Wolfgang **SKALA** (Uni Salzburg) *Investigations on 99-loop function and zinc inhibition round out the picture of human kallikrein-related peptidase 2.*

17:35 – 17:50 Katarina **PEGAN** (Jožef Stefan Institute) *ROS as signalling molecules during TNF-alpha induced molecular death pathways*

17:50 – 18:00 Wrap up: Judith **CLEMENTS** & Viktor **MAGDOLEN** Peter **GOETTIG**, Achim **KRÜGER**, Yoshi **ITOH**

**18:15 DINNER (PARADIES, ROSE)**

**20:00 – 23:45 NIGHT SESSION (CITY HALL)**

FRIDAY, MARCH 1

**09:00 – 10:30 Friday morning session I: Metalloproteases**

**09:00 – 09:10 Philipp ARNOLD & Walter STÖCKER: Metalloproteases**

- 09:10 – 09:25 Margarete **HECK** (University of Edinburgh) *The secrets of invadolysin revealed to date*
- 09:25 – 09:40 Claudia **BRODER** (Universität Kiel) *It's Make or Break: The Metalloproteases Meprin  $\alpha$  and Meprin  $\beta$  are C- and N-Procollagenases associated with Ehlers-Danlos syndrome VII*
- 09:40 – 09:55 Sven **FRIDRICH** (Universität Mainz) *Metalloprotease mediated cleavage of GARP A Receptor for latent TGF- $\beta$*
- 09:55 – 10:10 Konstantin **KARMILIN** (Universität Mainz) *Inhibition of Astacin Metalloproteases by Fetuins*
- 10:10 – 10:25 Johannes **PROX** (Universität Kiel) *Postnatal disruption of the disintegrin/metalloproteinase ADAM10 in brain causes epileptic seizures, learning deficits, altered spine morphology and defective synaptic functions*
- 10:25 – 10:30 Wrap up: Walter **STÖCKER** & Philipp **ARNOLD**

**10:30 – 11:00 COFFEE BREAK**

**11:00 – 12:30 Friday morning session II: Alzheimer**

**11:00 – 11:10 Christof HAFFNER, Sven DAHMS: Alzheimer-like diseases: What we know, what we forgot.**

- 11:10 – 11:25 Stefan **LICHTENTHALER** (TU München und DZNE) *BACE1 protease substrate identification in vitro and in vivo*
- 11:25 – 11:40 Alessio **COLOMBO** (DZNE Munich) *Constitutive  $\alpha$ - and  $\beta$ -secretase cleavages of the amyloid precursor protein are partially coupled in neurons, but not in frequently used cell lines*
- 11:40 – 11:55 Sandra **HOEFGEN** (Leibniz-Institute for Age Research, FLI Jena) *Heparin dependent dimerization of APP is mediated by its E1 but not its E2 domain.*
- 11:55 – 12:10 Rielana **WICHERT** (Universität Kiel) *ADAM9 and meprin  $\beta$  are potential regulators of the  $\alpha$ -secretase pathway to prevent Alzheimer's disease*
- 12:10 – 12:25 Manuel **THAN** (Leibniz Institute for Age Research, Jena) *Structural Biology of APP and its processing in Alzheimer's Disease*
- 12:25 – 12:30 Wrap up: Christof **HAFFNER** , Sven **DAHMS**

**12:45 LUNCH (Paradies, Rose)**

FRIDAY AFTERNOON SESSIONS: IMMUNOLOGY, BLOOD COAGULATION

**14:30 – 16:10 Friday afternoon session I: Immune defense proteases**

**14:30 – 14:40 Dieter JENNE & Nathalie BEAUFORT: Friend and foe alike – immune defense proteases**

14:40 – 14:55 Natascha **PERERA** (Helmholtz Zentrum München) *NSP4 is stored in azurophil granules and released by activated neutrophils as an active endoprotease with restricted specificity*

14:55 – 15:10 Lisa **HINKOFER** (Helmholtz Zentrum München) *Pathogenic relevance of antibodies interfering with the activity of proteinase 3: implications for ANCA-associated vasculitis*

15:10 – 15:25 Maresa **GRUNDHUBER** (LMU München) *Recombinant expression and comparative characterization of human mast cell tryptases*

15:25 – 15:40 Luisa-Astrid **FRATILA** (LMU München) *Interactions of tryptases with protease-activated receptors (PARs)*

15:40 – 15:55 Paulina **KASPERKIEWICZ** (Wroclaw University of Technology) *Human Neutrophil Elastase specificity and Activity Based Probe design*

15:55 – 16:10 Therese **DAU** (Helmholtz Zentrum München) *Decreased inhibitory capacity of natural  $\alpha$ 1-antitrypsin towards an autoprocessed two-chain form of neutrophil elastase*

**16:10 – 16:35 COFFEE BREAK**

**16:35 – 18:00 Friday afternoon session II: Blood proteases**

**16:35 – 16:45 Thomas ZÖGG, Henning STENNICKE: There will be BLOOD**

16:45 – 17:10 James **HUNTINGTON** (University of Cambridge) *Crystal Structure of the Prothrombinase Complex*

17:10 – 17:35 Ed **STURROCK** (University of Cape Town) *Novel domain-selective ACE inhibitors and mechanisms of blood pressure regulation.*

17:35 – 18:00 James **WHISSTOCK** (Monash University) *The structural biology of plasminogen*

**18:15 DINNER (PARADIES, ROSE)**

**20:00 – 23:00 MEETING AND MAKING FRIENDS IN PROTEOLYSIS RESEARCH (PARADIES)**

SATURDAY, MARCH 2

**09:00 – 10:30 Saturday morning session I: New frontiers in protease research**

**09:00 – 09:10 Marcin DRAG, Christian SOMMERHOFF: New frontiers in protease research**

09:10 – 09:25 Michael **SCHÖPFEL** (Universität Halle-Wittenberg) *Protein N-terminal modification by reverse proteolysis using trypsiligase.*

09:25 – 09:40 Roman **MANETSCH** (University of South Florida) *Kinetic target-guided synthesis: A mass spectrometry-based fragment evolution strategy for "undruggable" targets*

09:40 – 09:55 Caroline **HUGHES** (Queen's University Belfast) *Real-time visualisation of nanoparticle induced pulmonary toxicity using tagged protease affinity probes.*

09:55 – 10:10 Eva **SCHARRER** (LMU München) *Latent TGF- $\beta$ -binding protein 1 (LTBP-1) is a novel substrate for the CARASIL-relevant serine protease HTRA1*

10:10 – 10:25 Sven **DAHMS** (Fritz Lipmann Institute Jena) *Large scale expression of furin for biochemical and structural studies*

10:25 – 10:30 Marcin **DRAG**, Christian **SOMMERHOFF**: Wrap up

**10:30 – 11:00 COFFEE BREAK**

**11:00 – 12:30 Saturday morning session II: Ever new stories about cysteine proteases**

11:00 – 11:10 Lukas **MACH**, Michael **GROLL**: Ever new stories about cysteine proteases

11:10 – 11:25 Thomas **ZÖGG** (University of Salzburg) *Crystal structures of the viral protease Npro imply distinct roles for the catalytic water in catalysis.*

11:25 – 11:40 Markus **TOMEK** (BOKU Vienna) *Characterization of TF0955 – A putative protease of the oral pathogen *Tannerella forsythia*.*

11:40 – 11:55 Andrea **HENZE** (University of Potsdam) *In search for the RBP4-protease.*

11:55 – 12:10 Melanie **NIEMER** (BOKU Wien) *Characterization of three *Nicotiana benthamiana* papain-like cysteine proteinases*

12:10 – 12:25 Jelena **RAJKOVIC** (Jožef Stefan Institute, Ljubljana) *Autophagins in the parasite *Trypanosoma cruzi**

12:25 – 12:50 Jan **POTEMPA** (Jagiellonian University & University of Louisville) *A novel zymogenic mechanism for cysteine peptidases*

12:50 – 12:55 Lukas **MACH**, Michael **GROLL**: Wrap up

**13:00 LUNCH**

SATURDAY AFTERNOON SESSION: BUILDING YOUR CAREER IN SCIENCE

**14:30 – 17:00 Saturday afternoon session: Building your career in science**

***OPTIONAL PROGRAM: CAREER WORKSHOP***

14:30 – 17:00 Hiking and Round Table Discussion

Beautiful walk to the Gasthof Rosengarten in St. Zyprian (20–30 min one way). At the Gasthof Rosengarten five PIs (Klaudia Brix, Judith Clements, Wolf-Dieter Schleuning, Henning Stennicke, James Whisstock) from academia and industry will provide their insights, do's and don'ts in how to develop a career in academia and industry

**19:00 GALA DINNER AT CASTLE PRÖSELS**

SUNDAY, MARCH 3

10:00 Bus departure

## **ABSTRACTS**

Abstracts are not included in the online-version of the program.

## **LIST OF PARTICIPANTS – THE WINTER SCHOOL FACEBOOK**

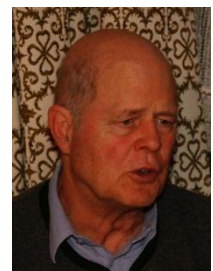


## The Winterschool Facebook

Philipp ARNOLD  
Johannes Gutenberg-  
University Mainz  
Institute of Zoology  
Müllerweg 6  
D-55116 Mainz  
Germany  
[arnoldp@uni-mainz.de](mailto:arnoldp@uni-mainz.de)  
☎ +49 6131 25575



Wolfram BODE  
Max Planck Institute of  
Biochemistry  
Am Klopferspitz 18  
D-82152 Martinsried  
Germany  
[wolfram.bode@gmx.de](mailto:wolfram.bode@gmx.de)  
☎ +49 89 8504807



Ulrich AUF DEM KELLER  
ETH Zurich  
Institute of Molecular Health  
Sciences  
Schafmattstraße 22  
CH-8093 Zurich  
Switzerland  
[ulrich.aufdemkeller@biol.ethz.ch](mailto:ulrich.aufdemkeller@biol.ethz.ch)  
☎ +41 44 633 3392



Melanie BÖRRIES  
University of Freiburg  
Institute of Molecular  
Medicine and Cell  
Research  
Stefan-Meier-Straße 17  
D-79104 Freiburg  
Germany  
[melanie.boerries@zbsa.de](mailto:melanie.boerries@zbsa.de)  
☎ +49 761 203 97154



Beatrice BACHMEIER  
Klinikum der Universität  
München  
Institute of Laboratory  
Medicine  
Nussbaumstraße 20  
D-80336 Munich  
Germany  
[bachmeier@med.uni-muenchen.de](mailto:bachmeier@med.uni-muenchen.de)  
☎ +49 89 5160 2543



Hans BRANDSTETTER  
University of Salzburg  
Dept. Molecular Biology  
Billrothstraße 11  
A-5020 Salzburg  
Austria  
[hans.brandstetter@sbg.ac.at](mailto:hans.brandstetter@sbg.ac.at)  
☎ +43 662 8044 7200



Nathalie BEAUFORT  
Ludwig-Maximilians-University  
Institute for Stroke and  
Dementia Research  
Max-Lebsche-Platz 30  
D-81377 Munich  
Germany  
[nbeaufortgbb@yahoo.fr](mailto:nbeaufortgbb@yahoo.fr)  
☎ +49 89 7095 8364



Klaudia BRIX  
Jacobs University Bremen  
School of Engineering and  
Science  
Research Center MOLIFE  
Campus Ring 6  
D-28759 Bremen  
Germany  
[k.brix@jacobs-university.de](mailto:k.brix@jacobs-university.de)  
☎ +49 421 200 3246



Christoph BECKER-  
PAULY  
University of Kiel  
Institute of Biochemistry  
Rudolf-Höber-Straße 1  
D-24118 Kiel  
Germany  
[cbeckerpauly@biochem.uni-kiel.de](mailto:cbeckerpauly@biochem.uni-kiel.de)  
☎ +49 431 880 7118



Claudia BRODER  
University of Kiel  
Institute of Biochemistry  
Rudolf-Höber-Straße 1  
D-24118 Kiel  
Germany  
[cbroder@biochem.uni-kiel.de](mailto:cbroder@biochem.uni-kiel.de)  
☎ +49 431 880 7118



James BURROWS  
Queen's University Belfast  
Molecular Therapeutics,  
School of Pharmacy  
97 Lisburn Road  
BT9 7BL, Belfast  
Northern Ireland, UK  
[j.burrows@qub.ac.uk](mailto:j.burrows@qub.ac.uk)  
☎ +44 28 9097 2703



Alessio COLOMBO  
DZNE Munich  
Neuroproteomics lab  
Max-Lebsche-Platz 30  
D-81377 Munich  
Germany  
[alessio.colombo@dzne.lmu.de](mailto:alessio.colombo@dzne.lmu.de)  
☎ +49 89 7095 8423



Hauke BUSCH  
University of Freiburg  
Institute of Molecular  
Medicine and Cell Research  
Stefan-Meier-Straße 17  
D-79104 Freiburg  
Germany  
[hauke.busch@zbsa.de](mailto:hauke.busch@zbsa.de)  
☎ +49 761 20397 154



Haissi CUI  
Klinikum rechts der Isar  
der TU München  
Institut für Experimentelle  
Onkologie und  
Therapieforschung  
Ismaninger Straße 22  
D-81675 Munich  
Germany  
[haissi.cui@lrz.tum.de](mailto:haissi.cui@lrz.tum.de)  
☎ +49 4140 4459



Anna BYZIA  
Wroclaw University of  
Technology  
Department of Chemistry  
Wybrzeze Wyspianskiego 29  
PL-50-370 Wroclaw  
Poland  
[anna.byzia@pwr.wroc.pl](mailto:anna.byzia@pwr.wroc.pl)  
☎ +48 71 320 24 55



Sven O. DAHMS  
Leibniz Institute for Age  
Research  
Fritz Lipmann Institute  
Beutenbergstraße 11  
D-07745 Jena  
Germany  
[sdahms@fli-leibniz.de](mailto:sdahms@fli-leibniz.de)  
☎ +49 3641 656208



Claudia CERNY  
Klinische Forschergruppe der  
Frauenklinik der TU München  
Schneckenburgerstraße 6  
D-81675 Munich  
Germany  
[claudia.cerny@tum.de](mailto:claudia.cerny@tum.de)  
☎ +49 89 4140 7412



Elfriede DALL  
University of Salzburg  
Dept. Molecular Biology  
Billrothstraße 11  
A-5020 Salzburg  
Austria  
[elfriede.dall@sbg.ac.at](mailto:elfriede.dall@sbg.ac.at)  
☎ +43 662 8044 7200



Judith CLEMENTS  
Queensland University of  
Technology  
Institute of Health and  
Biomedical Innovation  
60 Musk Avenue, Kelvin  
Grove  
Brisbane QLD 4059  
Australia  
[j.clements@qut.edu.au](mailto:j.clements@qut.edu.au)  
☎ +61 7 3138 6198



Therese DAU  
Helmholtz Zentrum München  
Comprehensive Pneumology  
Center  
Max-Lebsche-Platz 31  
D-81377 München  
Germany  
[therese.dau@helmholtz-muenchen.de](mailto:therese.dau@helmholtz-muenchen.de)  
☎ +49 3187 1653



Julia DORN  
Frauenklinik München  
Klinikum rechts der Isar  
Ismaninger Straße 22  
D-81675 Munich,  
Germany  
[julia.dorn@lrz.tu-muenchen.de](mailto:julia.dorn@lrz.tu-muenchen.de)  
☎ +49 89 4140 2446



Luisa-Astrid FRATILA  
Ludwig-Maximilians-  
University  
Institute of Laboratory  
Medicine  
Nußbaumstraße 20  
D-80336 Munich  
Germany  
[luisa-astrid.fratila@med.lmu.de](mailto:luisa-astrid.fratila@med.lmu.de)  
☎ +49 89 5160 2597



Marcin DRAG  
Wroclaw University of  
Technology  
Department of Chemistry  
Wyb. Wyspianskiego 27  
PL-50-370 Wroclaw  
Poland  
[marcin.drag@pwr.wroc.pl](mailto:marcin.drag@pwr.wroc.pl)  
☎ +48 71 320 4526



Sven FRIDRICH  
Johannes Gutenberg-  
University of Mainz  
Dept. Cell and Matrix  
Biology  
Johannes von Müllerweg 6  
D-55128 Mainz  
Germany  
[svenfrid@students.uni-mainz.de](mailto:svenfrid@students.uni-mainz.de)  
☎ +49 61313924271



Katherine FALKOWSKI  
Jagiellonian University  
Faculty of Biochemistry,  
Biophysics and Biotechnology  
ul. Gronostajowa 7  
PL-30-387 Kraków  
Poland  
[kasia.falkowski@gmail.com](mailto:kasia.falkowski@gmail.com)  
☎ +48 791 095 415



Hans FRITZ  
Ludwig-Maximilians-  
University Munich  
Dept Clinical Chemistry  
and Clinical Biochemistry  
Nußbaumstraße 20  
D-80336 Munich  
Germany  
[fritz@med.uni-muenchen.de](mailto:fritz@med.uni-muenchen.de)  
☎ +49 8178 1534



Han FANG  
University of Salzburg  
Dept. Molecular Biology  
Billrothstraße 11  
A-5020 Salzburg  
Austria  
[han.fang@stud.sbg.ac.at](mailto:han.fang@stud.sbg.ac.at)  
☎ +43 662 8044 7200



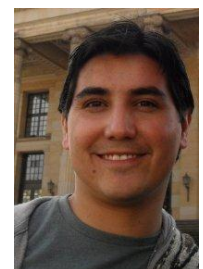
Peter GÖTTIG  
University of Salzburg  
Dept. Molecular Biology  
Billrothstraße 11  
A-5020 Salzburg  
Austria  
[peter.goettig@sbg.ac.at](mailto:peter.goettig@sbg.ac.at)  
☎ +43 662 8044 7200



Claus-Werner FRANZKE  
University of Freiburg  
Dept. Molecular Medicine  
Hauptstraße 7  
D-79100 Freiburg  
Germany  
[claus-werner.franzke@uniklinik-freiburg.de](mailto:claus-werner.franzke@uniklinik-freiburg.de)  
☎ +49 761 27067850



Alejandro GOMEZ-AULI  
Albert-Ludwigs-University  
Freiburg  
Institute of Molecular  
Medicine and Cell Research  
Stefan-Meier-Straße 17  
D-79104 Freiburg  
Germany  
[alejandro.gomez@sbgm.uni-freiburg.de](mailto:alejandro.gomez@sbgm.uni-freiburg.de)  
☎ +49 761 203 9603





Michael GROLL  
Technische Universität  
München  
Dept. Chemistry  
Lichtenbergstraße 4  
D-85747 Garching/Munich  
Germany  
[michael.groll@ch.tum.de](mailto:michael.groll@ch.tum.de)  
☎ +49 89 289 13361



Christof HAFFNER  
Ludwig-Maximilians-  
University  
Institute for Stroke and  
Dementia Research  
Max-Lebsche-Platz 30  
D-81377 Munich  
Germany  
[christof.haffner@med.uni-muenchen.de](mailto:christof.haffner@med.uni-muenchen.de)  
☎ +49 89 7095 8352



Eva GROSS  
Technische Universität München  
Dept. Gynecology  
Ismaninger Strasse 22  
D-81675 Munich  
Germany  
[eva.gross@lrz.tum.de](mailto:eva.gross@lrz.tum.de)  
☎ +49 89 41402429

Mads Haugland HAUGEN  
Oslo University Hospital  
Institute for Cancer Research  
PO Box 4359 Nydalen  
NO-0424 Oslo  
Norway  
[mads.haugen@rr-research.no](mailto:mads.haugen@rr-research.no)  
☎ +47 22781774



Maresa GRUNDHUBER  
Ludwig-Maximilians-University  
Munich  
Institute of Laboratory Medicine  
Nussbaumerstraße 20  
D-80336 Munich  
Germany  
[maresa.grundhuber@med.uni-muenchen.de](mailto:maresa.grundhuber@med.uni-muenchen.de)  
☎ +49 89 51602597



Margarete MS HECK  
University of Edinburgh  
Queen's Medical Research  
Insitute  
47 Little France Crescent  
Edinburgh EH16 4TJ  
United Kingdom  
[margarete.heck@ed.ac.uk](mailto:margarete.heck@ed.ac.uk)  
☎ +44 131 242 6694



Barbara GRÜNWARD  
Klinikum rechts der Isar der TU München  
Institut für Experimentelle Onkologie und  
Therapieforschung  
Ismaningerstraße 22  
D-81675 Munich  
Germany  
[barbara.gruenwald@lrz.tum.de](mailto:barbara.gruenwald@lrz.tum.de)  
☎ +49 4140 4459

Andrea HENZE  
University of Potsdam  
Institute for Nutritional  
Science  
Arthur-Scheunert-Allee  
114-116  
D-14558 Nuthetal  
Germany  
[henze@uni-potsdam.de](mailto:henze@uni-potsdam.de)  
☎ +49 33200 88 55 39



Shihui GUO  
University of Salzburg  
Dept. Molecular Biology  
Billrothstraße 11  
A-5020 Salzburg  
Austria  
[shihui.guo@sbg.ac.at](mailto:shihui.guo@sbg.ac.at)  
☎ +43 662 8044 7200



Lisa HINKOFER  
Helmholtz Zentrum München  
Comprehensive Pneumology  
Center  
Max-Lebsche-Platz 31  
D-81377 Munich  
Germany  
[lisa.hinkofer@helmholtz-muenchen.de](mailto:lisa.hinkofer@helmholtz-muenchen.de)  
☎ +49 3187 1627



Sandra HOEFGEN  
Leibniz-Institute for Age Research  
Fritz Lipmann Institute (FLI)  
Beutenbergstraße 11  
D-07745 Jena  
Germany  
[shoefgen@fli-leibniz.de](mailto:shoefgen@fli-leibniz.de)  
☎ +49 341 656164

Caroline HUGHES  
Queen's University Belfast  
Molecular Therapeutics, School of Pharmacy  
97 Lisburn Road  
BT9 7BL, Belfast  
Northern Ireland, UK  
[chughes965@qub.ac.uk](mailto:chughes965@qub.ac.uk)  
☎ +44 28 9097 2086

James A. HUNTINGTON  
University of Cambridge  
Dept. Haematology  
Cambridge CB2 2XY  
United Kingdom  
[jah52@cam.ac.uk](mailto:jah52@cam.ac.uk)  
☎ +44 1223 763 230



Yoshifumi ITOH  
University of Oxford  
Kennedy Institute of  
Rheumatology  
65 Aspenlea Road  
London W6 8LH  
United Kingdom  
[yoshi.itoh@kennedy.ox.ac.uk](mailto:yoshi.itoh@kennedy.ox.ac.uk)  
☎ +44 8383 4410



Jakub JAWORSKI  
Queen's University Belfast  
Molecular Therapeutics, School  
of Pharmacy  
97 Lisburn Road  
BT9 7BL, Belfast  
Northern Ireland, UK  
[jjaworski01@qub.ac.uk](mailto:jjaworski01@qub.ac.uk)  
☎ +44 28 9097 2703



Dieter JENNE  
Helmholtz-Zentrum München  
Comprehensive Pneumology  
Center  
Max-Lebsche-Platz 31  
D-81377 Munich  
Germany  
[djenne@neuro.mpg.de](mailto:djenne@neuro.mpg.de)  
☎ +49 89 31874664



Matthew JONES  
Novartis Institutes for  
BioMedical Research NIBR  
CPC/EPP/BIO  
Fabrikstrasse 16-2.29.4  
CH-4056 Basel  
Switzerland  
[matthew-1.jones@novartis.com](mailto:matthew-1.jones@novartis.com)  
☎ +41 61 6967063



Konstantin KARMILIN  
Johannes Gutenberg-  
University Mainz  
Institute of Zoology, Cell  
and Matrix Biology  
Johannes-von-Müller-Weg 6  
D-55128 Mainz  
Germany  
[karmilik@uni-mainz.de](mailto:karmilik@uni-mainz.de)  
☎ +49 6131 3924271



Paulina KASPERKIEWICZ  
Wroclaw University of  
Technology  
Department of Chemistry  
Wybrzeze Wyspianskiego 29  
PL-50-370 Wroclaw  
Poland  
[paulina.kasperkiewicz@pwr.wroc.pl](mailto:paulina.kasperkiewicz@pwr.wroc.pl)  
☎ +48 71 320 24 55



Julia KOBUCH  
Klinikum rechts der Isar der TU  
München  
Institut für Experimentelle  
Onkologie & Therapieforschung  
Ismaningerstraße 22  
D-81675 Munich  
Germany  
[julia.kobuch@lrz.tum.de](mailto:julia.kobuch@lrz.tum.de)  
☎ +49 4140 4459



Matthias KOTZSCH  
Universitätsklinikum der Technischen  
Universität Dresden  
Institut für Pathologie  
Fetscherstraße 74  
D-01307 Dresden  
Germany  
[matthias.kotzsch@uniklinikum-dresden.de](mailto:matthias.kotzsch@uniklinikum-dresden.de)  
☎ +49 351 458 3000

Achim KRUEGER  
Klinikum rechts der Isar, TU  
München  
Institut für Experimentelle  
Onkologie & Therapieforschung  
Ismaningerstraße 22  
D-81675 Munich  
Germany  
[achim.krueger@lrz.tu-muenchen.de](mailto:achim.krueger@lrz.tu-muenchen.de)  
☎ +49 89 4140 4463

Michaela LASSACHER  
University of Salzburg  
Dept. Molecular Biology  
Billrothstraße 11  
A-5020 Salzburg  
Austria  
[michaela.lassacher@sbg.ac.at](mailto:michaela.lassacher@sbg.ac.at)  
☎ +43 662 8044 7200

Stefan LICHTENTHALER  
Technische Universität  
München and DZNE  
(German Center for  
Neurodegenerative Diseases)  
Max-Lebsche-Platz 30  
D-81377 Munich  
Germany  
[stefan.lichtenthaler@tum.de](mailto:stefan.lichtenthaler@tum.de)  
☎ +49 89 70958416

Lukas MACH  
University of Natural  
Resources and Life Sciences,  
Vienna  
Dept. Applied Genetics and  
Cell Biology  
Muthgasse 18  
A-1190 Vienna  
Austria  
[lukas.mach@boku.ac.at](mailto:lukas.mach@boku.ac.at)  
☎ +43 1 47654 6360

Viktor MAGDOLEN  
Klinische Forschergruppe  
der Frauenklinik der TU  
München  
Klinikum rechts der Isar  
Ismaningerstraße 22  
D-81675 Munich  
Germany  
[viktor.magdolen@lrz.tum.de](mailto:viktor.magdolen@lrz.tum.de)  
☎ +49 89 4140 2493



Roman MANETSCH  
University of South Florida  
Department of Chemistry  
4202 East Fowler Avenue  
Tampa FL-33620  
USA  
[manetsch@usf.edu](mailto:manetsch@usf.edu)  
☎ +1 813 974 7306



Nikolay MAYLSHEV  
Klinische Forschergruppe  
der Frauenklinik der TU  
München  
Schneckenburgerstraße 6  
D-81675 München  
Germany  
[nikolay\\_malyshev@mail.ru](mailto:nikolay_malyshev@mail.ru)  
☎ +49 089 4140 7412



Dimitra MAZARAKI  
Klinische Forschergruppe der  
Frauenklinik der TU  
München  
Klinikum rechts der Isar  
Ismaningerstraße 22  
D-81675 Munich  
Germany  
[mazaraki.dim@gmail.com](mailto:mazaraki.dim@gmail.com)  
☎ +49 89 4140 0

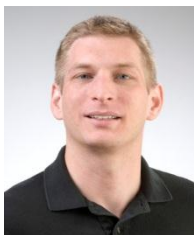


Katharina MEYER  
Johannes Gutenberg-  
University of Mainz  
Department of Cell and  
Matrix Biology  
Johannes von Müllerweg 6  
D-55128 Mainz  
Germany  
[meyerk@uni-mainz.de](mailto:meyerk@uni-mainz.de)  
☎ +49 61313924271





Marco MEYERHOFER  
Novartis Pharma AG  
NIBR/CPC/EPP  
Fabrikstrasse 16  
CH-4056 Basel  
Switzerland  
[marco.meyerhofer@novartis.com](mailto:marco.meyerhofer@novartis.com)  
☎ +41 643245919



Natascha PERERA  
Helmholtz Zentrum  
München  
Comprehensive  
Pneumology Center  
Max-Lebsche-Platz 31  
D-81377 Munich  
Germany  
[natascha.perera@helmholtz-muenchen.de](mailto:natascha.perera@helmholtz-muenchen.de)  
☎ +49 3187 1627



Melanie NIEMER  
University of Natural  
Resources and Life Sciences  
Department of Applied  
Genetics and Cell Biology  
Muthgasse 18  
A-1190 Vienna  
Austria  
[melanie.niemer@boku.ac.at](mailto:melanie.niemer@boku.ac.at)  
☎ +43 1 47654 6361



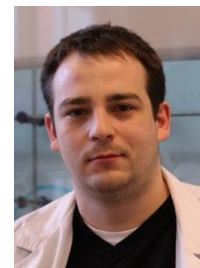
Christoph PETERS  
University of Freiburg  
Institute for Molecular  
Medicine and Cell  
Research  
Stefan-Meier-Strasse 17  
D-79104 Freiburg  
Germany  
[christoph.peters@mol-med.uni-freiburg.de](mailto:christoph.peters@mol-med.uni-freiburg.de)  
☎ +49 761 203 9600/9601



Elisabeth NIMMERFALL  
University of Natural  
Resources and Life Sciences  
Department of Applied  
Genetics and Cell Biology  
Muthgasse 18  
A-1190 Vienna  
[elisabeth.nimmerfall@boku.ac.at](mailto:elisabeth.nimmerfall@boku.ac.at)  
☎ +43 1 47654 6361



Marcin POREBA  
Wroclaw University of  
Technology  
Department of Chemistry  
Wybrzeze Wyspianskiego 29  
PL-50-370 Wroclaw  
Poland  
[marcin.poreba@pwr.wroc.pl](mailto:marcin.poreba@pwr.wroc.pl)  
☎ +48 71 320 24 55



Christopher OVERALL  
University of British  
Columbia  
Centre for Blood Research  
4.401 Life Science Centre  
2350 Health Sciences Mall  
Vancouver, BC V6T 1Z3  
Canada  
[chris.overall@ubc.ca](mailto:chris.overall@ubc.ca)  
☎ +1 604 822 2958



Jan POTEMPA  
Jagiellonian University  
Faculty of Biochemistry,  
Biophysics and Biotechnology  
Gronostajowa 7  
PL-30-387 Krakow  
Poland  
[potempa@uga.edu](mailto:potempa@uga.edu)  
☎ +48-12-664-6343



Katarina PEGAN  
Jožef Stefan Institute  
Department of Biochemistry  
and Molecular and Structural  
Biology  
Jamova cesta 39  
SI-1000 Ljubljana  
Slovenia  
[katarina.pegan@ijs.si](mailto:katarina.pegan@ijs.si)  
☎ +386 1 477 3753



Johannes PROX  
University of Kiel  
Institute of Biochemistry  
Rudolf-Höber-Straße 1  
D-24118 Kiel  
Germany  
[jprox@biochem.uni-kiel.de](mailto:jprox@biochem.uni-kiel.de)  
☎ +49-431-8807118



Jelena RAJKOVIC  
Jožef Stefan Institute  
Department of Biochemistry  
and Molecular and Structural  
Biology  
Jamova cesta 39  
SI-1000 Ljubljana  
Slovenia  
[jelena.rajkovic@ijs.si](mailto:jelena.rajkovic@ijs.si)  
☎ +386 1 477 3410



Thomas REINHECKEL  
Albert Ludwigs University  
Freiburg  
Institute of Molecular Medicine  
and Cell Research  
Stefan Meier Straße 17  
D-79104 Freiburg  
Germany  
[thomas.reinheckel@uniklinik-freiburg.de](mailto:thomas.reinheckel@uniklinik-freiburg.de)  
☎ +49 7612 039606



Fábio SABINO  
ETH Zürich  
Institute of Health Sciences  
Schafmattstraße 22  
CH-8093 Zürich  
Switzerland  
[fabio.sabino@biol.ethz.ch](mailto:fabio.sabino@biol.ethz.ch)  
☎ +41 44 633 3871



Kathrin SACHSE  
Albert-Ludwigs-University Freiburg  
Institute for Molecular Medicine and Cell  
Research  
Stefan Meier Straße 17  
D-79104 Freiburg  
Germany  
[kathrin.sachse@mol-med.uni-freiburg.de](mailto:kathrin.sachse@mol-med.uni-freiburg.de)  
☎: +49 0761 203 9633

Eva SCHARRER  
Institute of Stroke and  
Dementia Research  
Ludwig-Maximilians-  
University  
Max-Lebsche-Platz 30  
D-81377 Munich  
Germany  
[eva\\_scharrer@med.uni-muenchen.de](mailto:eva_scharrer@med.uni-muenchen.de)  
☎ +49 89 7095 8364



Pascal SCHLAGE  
ETH Zürich  
Institute of Health Sciences  
Schafmattstraße 22  
CH-8093 Zürich  
Switzerland  
[pascal.schlage@biol.ethz.ch](mailto:pascal.schlage@biol.ethz.ch)  
☎ +41 44 633 3871



Wolf-Dieter SCHLEUNING  
Steenbok  
Biopharmaceuticals  
Am Waldpark 26  
D-13467 Berlin  
Germany  
[wdschleuning@t-online.de](mailto:wdschleuning@t-online.de)  
☎ +49 304041966



Öyvind L.  
SCHÖNBERGER  
Downstream Processing II  
Baxter Innovations GmbH  
Uferstraße 15  
A-2304 Orth an der Donau  
Austria  
[oeyvind\\_schoenberger@baxter.com](mailto:oeyvind_schoenberger@baxter.com)  
☎ +43 1 20100 4319



Michael SCHÖPFEL  
Martin-Luther-University Halle-Wittenberg  
Institute of Biochemistry and Biotechnology  
Kurt-Mothes-Straße 3  
D-06120 Halle  
Germany  
[michael.schoepfel@biochemtech.uni-halle.de](mailto:michael.schoepfel@biochemtech.uni-halle.de)  
☎ +49 3455524890

Bastian SEUBERT  
Klinikum rechts der Isar der  
TU München  
Ismaningerstraße 22  
D-81675 Munich  
Germany  
[bastian.seubert@lrz.tum.de](mailto:bastian.seubert@lrz.tum.de)  
☎ +49 89 4140 4463





Florian Christoph SIGLOCH  
University of Freiburg  
Institute for Molecular Medicine and Cell  
Research  
Stefan-Meier-Straße 17  
D-79104 Freiburg  
Germany  
[florian.sigloch@mol-med.uni-freiburg.de](mailto:florian.sigloch@mol-med.uni-freiburg.de)  
☎ +49 761 2039614

Wolfgang SKALA  
University of Salzburg  
Dept. Molecular Biology  
Billrothstraße 11  
A-5020 Salzburg  
Austria  
[wolfgang.skala@sbg.ac.at](mailto:wolfgang.skala@sbg.ac.at)  
☎ +43 662 8044 7278

Susanne SÖLCH  
Klinische Forschergruppe der  
Frauenklinik der TU München  
Schneckenburgerstraße 6  
D-81675 Munich  
Germany  
[susanne.soelch@gmx.de](mailto:susanne.soelch@gmx.de)  
☎ +49 89 4140 7412

Christian SOMMERHOFF  
Ludwig-Maximilians-  
University  
Institute of Laboratory  
Medicine  
Nussbaumstr. 20  
D-80336 Munich  
Germany  
[sommerhoff@med.uni-muenchen.de](mailto:sommerhoff@med.uni-muenchen.de)  
☎ +49 89 5160 5153

Henning STENNICKE  
Novo Nordisk  
Novo Nordisk Park,  
DK-2760 Maaloev  
Denmark  
[hrse@novonordisk.com](mailto:hrse@novonordisk.com)  
☎ +45 3075 2556

Walter STÖCKER  
Johannes Gutenberg  
University Mainz  
Institute of Zoology, Cell  
and Matrix Biology  
Johannes-von-Müller-Weg 6  
D-55123 Mainz  
Germany  
[stoecker@uni-mainz.de](mailto:stoecker@uni-mainz.de)  
☎ +49 6131 3924273



Ed STURROCK  
University of Cape Town  
Institute of Infectious Disease  
and Molecular Medicine  
Suite 3.13, Wernher and Beit  
Building  
Anzio Road, Observatory 7925  
South Africa  
[edward.sturrock@uct.ac.za](mailto:edward.sturrock@uct.ac.za)  
☎ +27 21 4066312



Tripti TAMHANE  
Jacobs University Bremen  
School of Engineering and  
Science  
Campus Ring 6, Research II  
D-28759 Bremen  
Germany  
[t.tamhane@jacobs-university.de](mailto:t.tamhane@jacobs-university.de)  
☎ +49 421 200 3547



Manuel THAN  
Leibniz-Institute for Age  
Research  
Fritz Lipmann Institute Jena  
Beutenbergstraße 11  
D-07745 Jena  
Germany  
[than@fli-leibniz.de](mailto:than@fli-leibniz.de)  
☎ +49 3641 656170



Markus TOMEK  
University of Natural  
Resources and Life Sciences  
Dept. NanoBiotechnology  
Muthgasse 11  
A-1190 Vienna  
Austria  
[markus.tomek@boku.ac.at](mailto:markus.tomek@boku.ac.at)  
☎ +43 1 47654 229



Christian URSEL  
Martin-Luther-University Halle-Wittenberg  
Institute for Biochemistry/Biotechnology  
Kurt-Mothes-Straße 3  
D-06120 Halle  
Germany  
[christian.ursel@biochem.uni-halle.de](mailto:christian.ursel@biochem.uni-halle.de)  
☎ +49 345 5524890

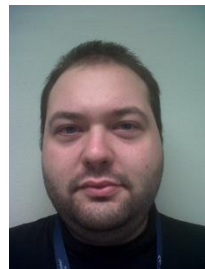
Athina VAKRAKOU  
Klinische Forschergruppe  
der Frauenklinik der TU  
München  
Schneckenburgerstraße 6  
D-81675 Munich  
Germany  
[athinavak@yahoo.gr](mailto:athinavak@yahoo.gr)  
☎ +49 89 4140 7412



Robert VIDMAR  
Jožef Stefan Institute  
Department of Biochemistry  
and Molecular and Structural  
Biology  
Jamova cesta 39  
SI-1000 Ljubljana  
Slovenia  
[robert.vidmar@ijs.si](mailto:robert.vidmar@ijs.si)  
☎ +386 1 477 3410



Matej VIZOVIŠEK  
Jožef Stefan Institute  
Department for Biochemistry  
and Molecular and Structural  
Biology  
Jamova cesta 39  
SI-1000 Ljubljana  
Slovenia  
[matej.vizovisek@ijs.si](mailto:matej.vizovisek@ijs.si)  
☎ +386 1 477 3854



Juliane WEISSER  
University of Freiburg  
Institute for Molecular Medicine and Cell  
Research  
Stefan-Meier-Straße 17  
D-79104 Freiburg  
Germany  
[juliane.weisser@merkur.uni-freiburg.de](mailto:juliane.weisser@merkur.uni-freiburg.de)  
☎ +49 761 2039614

James C. WHISSTOCK  
Monash University  
Dept Biochemistry &  
Molecular Biology  
Bldg 77, Wellington Road  
Clayton, Victoria 3800  
Australia  
[james.whisstock@monash.edu](mailto:james.whisstock@monash.edu)  
☎ +61 3 9902 9312



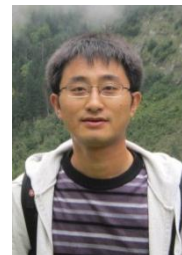
Rielana WICHERT  
University of Kiel  
Institute of Biochemistry  
Rudolf-Höber-Straße 1  
D-24118 Kiel  
Germany  
[rwichert@biochem.uni-kiel.de](mailto:rwichert@biochem.uni-kiel.de)  
☎ +49 431 8807118



Richard WILKINSON  
Queen's University Belfast  
Molecular Therapeutics, School of Pharmacy  
97 Lisburn Road  
BT9 7BL, Belfast  
Northern Ireland, UK  
[rwilkinson04@qub.ac.uk](mailto:rwilkinson04@qub.ac.uk)  
☎ +44 2890972164

Julia WOLANSKI  
Albert-Ludwigs-University Freiburg  
Institute for Molecular Medicine and Cell  
Research  
Stefan-Meier-Straße 17  
D-79104 Freiburg  
Germany  
[ju.wolanski@googlemail.com](mailto:ju.wolanski@googlemail.com)  
☎ +49 7612 039633

Feng YANG  
Klinische Forschergruppe der  
Frauenklinik der TU München  
Schneckenburgerstraße 6  
D-81675 Munich  
Germany  
[yangf1983@gmail.com](mailto:yangf1983@gmail.com)  
☎ +49 89 4140 7412



Caixia ZHU  
Klinische Forschergruppe der  
Frauenklinik der TU München  
Ismaninger Straße 22  
D-81675 Munich  
[cxzhu88@yahoo.cn](mailto:cxzhu88@yahoo.cn)  
☎ +49 01639497497



Thomas ZÖGG  
University of Salzburg  
Dept. Molecular Biology  
Billrothstraße 11  
A-5020 Salzburg  
Austria  
[Thomas.zoegg@sbg.ac.at](mailto:Thomas.zoegg@sbg.ac.at)  
☎ +43 662 8044 7200

