



明治大学

MEIJI UNIVERSITY

Briefing Session about our Exchange Student Program

*“You” make
the world go round.*
「個」が世界を動かす。



TODAY's AGENDA

01

Introduction to Meiji University

02

Study in Tokyo

03

Available Schools

04

Application Procedure

The background features a collage of images related to Meiji University. On the left, there's a vertical strip showing a laboratory with scientific equipment at the top, a professor in a suit pointing at a chalkboard with Japanese text in the middle, and a student in a lab coat working at a desk at the bottom. On the right, another vertical strip shows a student with short dark hair sitting at a desk, a person painting graffiti on a wall, and a person writing on a piece of paper. The central area is a light gray horizontal band containing the title text.

01 Introduction to Meiji University

Introduction to Meiji University



**Meiji University was
Founded in 1881
by 3 young Lawyer**

THE NUMBER OF PEOPLE INVOLVED MEIJI

Applicants

About

100,000
A year

Students

About

30,000

Faculties

About

2,900

Alumni

About

590,000

Including 2 prime ministers

**One of the most traditional,
leading and the largest private universities in Japan**

Introduction to Meiji University

UNDERGRADUATE SCHOOLS

Law



Political Science
and Economics



Arts and Letters



Global Japanese Studies※



Agriculture



Commerce



Business Administration



Information and
Communication



Science and Technology



Interdisciplinary
Mathematical Sciences



GRADUATE SCHOOLS

Law



Commerce



Political Science
and Economics



Business
Administration※



Arts and Letters



Science and
Technology※



Agriculture



Information and
Communication



Humanities



Advanced
Mathematical
Sciences※



Global Japanese
Studies



Global
Governance※



PROFESSIONAL GRADUATE SCHOOLS

Governance Studies※



Global Business



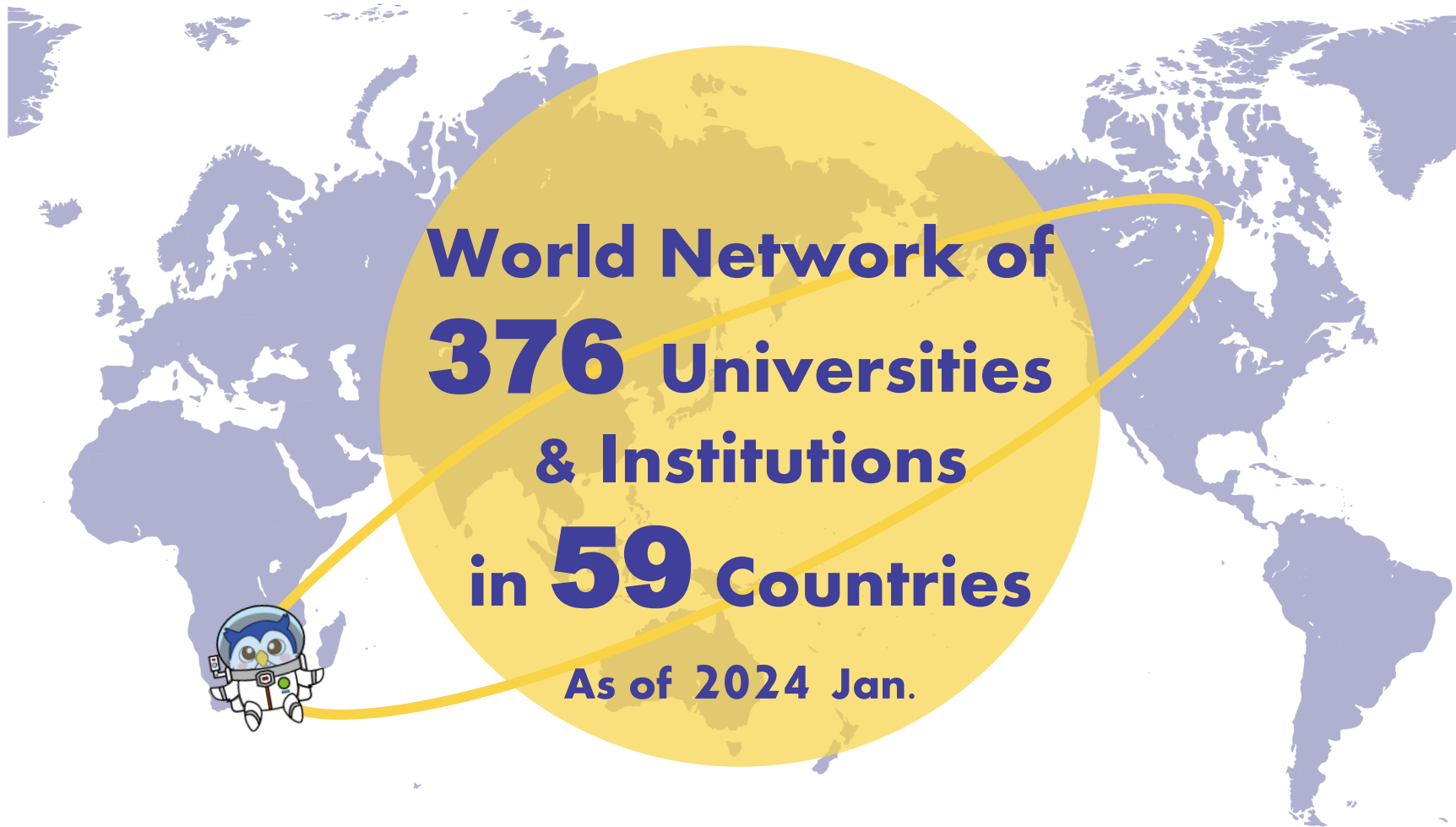
Professional
Accountancy



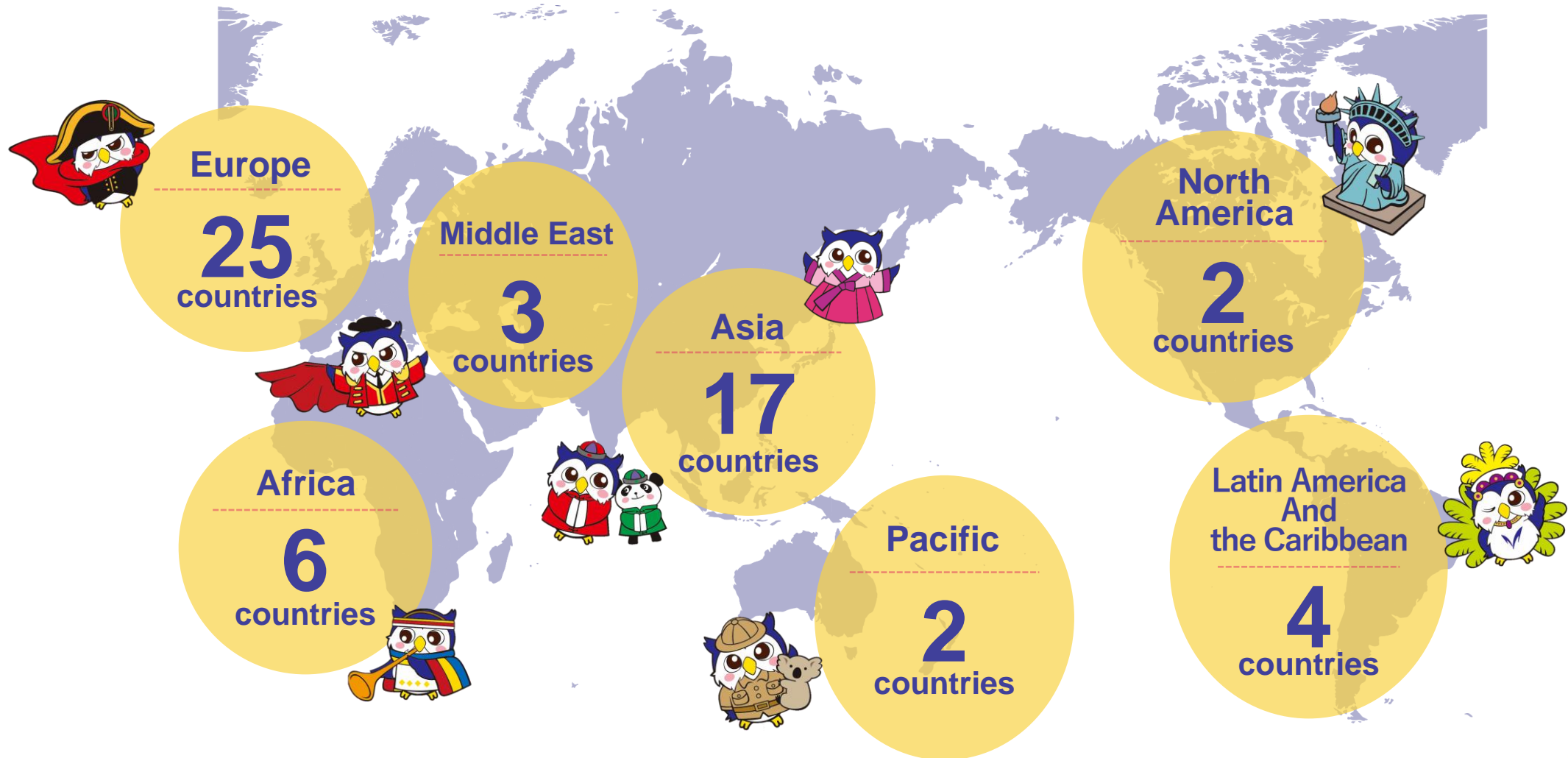
Juris Doctor Course
(Law School)



WORLD-WIDE NETWORK



WORLD-WIDE NETWORK





02

Study in Tokyo

Study in Tokyo

Tokyo, the Global Power City

Meiji University is
located in center of **Tokyo**



Tokyo, the Global Power City

Economy



経済

R&D



研究・開発

Cultural Interaction



文化・交流

Livability



居住

Environment



環境

Accessibility



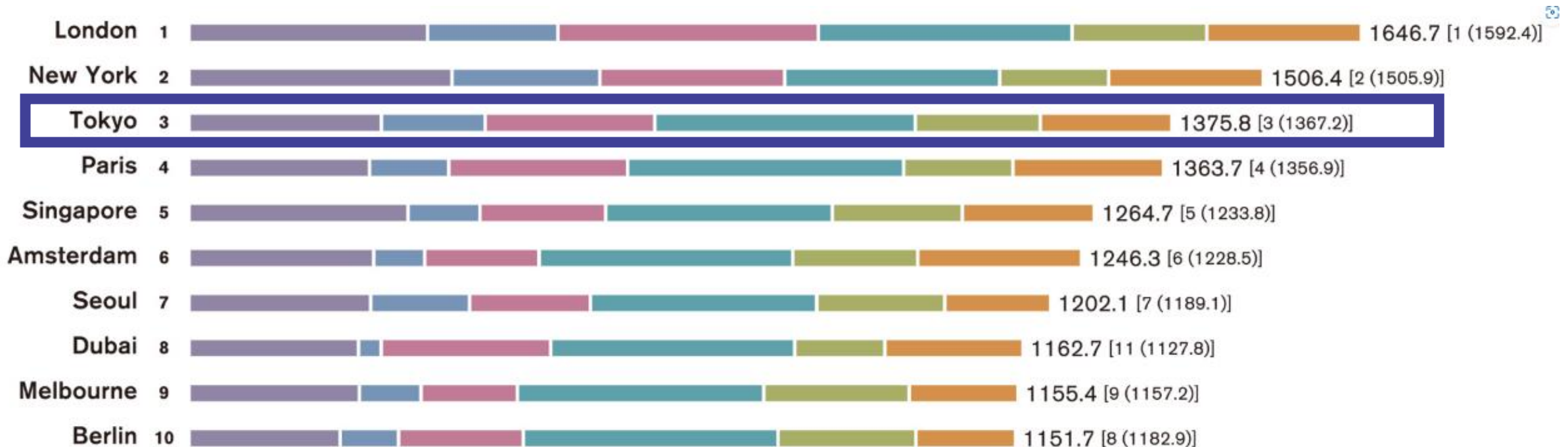
交通・アクセス

1	New York	371.1	New York	206.5	London	367.6	Paris	390.0	Stockholm	228.7	Amsterdam	229.2
2	London	336.2	London	181.4	New York	259.4	Madrid	380.9	Copenhagen	224.2	Frankfurt	217.6
3	Beijing	309.4	Los Angeles	154.9	Paris	250.7	Tokyo	367.7	Geneva	217.6	New York	216.1
4	Singapore	308.3	Tokyo	143.4	Dubai	237.5	Barcelona	365.6	Helsinki	210.7	London	215.9
5	Zurich	302.7	Boston	137.7	Tokyo	237.5	Vienna	360.0	Vienna	210.5	Paris	210.4
6	Dublin	298.7	Seoul	136.4	Istanbul	207.2	Berlin	359.3	Melbourne	203.1	Dubai	192.5
7	San Francisco	291.4	San Francisco	117.7	Madrid	183.9	Frankfurt	358.1	Sydney	202.1	Singapore	183.8
8	Geneva	274.6	Chicago	113.0	Moscow	176.5	Amsterdam	357.9	Zurich	201.5	Tokyo	183.3
9	Washington, DC	271.3	Paris	108.3	Singapore	174.9	London	357.9	Berlin	192.2	Shanghai	175.5
10	Tokyo	270.1	Hong Kong	107.4	Berlin	173.4	Stockholm	357.3	Vancouver	189.8	Copenhagen	174.5

Tokyo, the Global Power City



Tokyo, the Global Power City



Tokyo is one of the most **“Attractive”** cities in the world.

CAMPUS LOCATION

SURUGADAI



IZUMI



IKUTA



NAKANO



Study in Tokyo



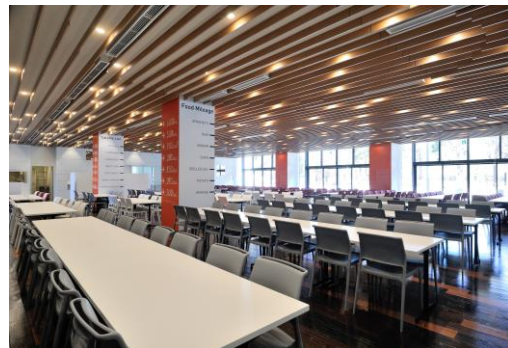
CAMPUS TOUR at MEIJI(2mins)

SURUGADAI CAMPUS



Study in Tokyo

NAKANO CAMPUS



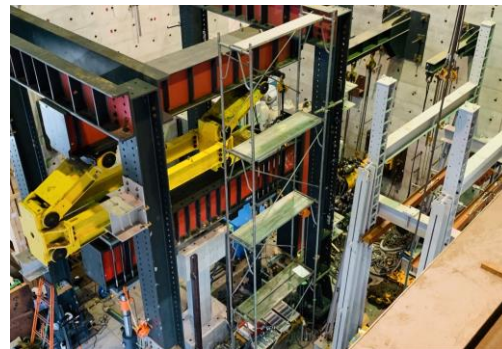
Study in Tokyo

IZUMI CAMPUS

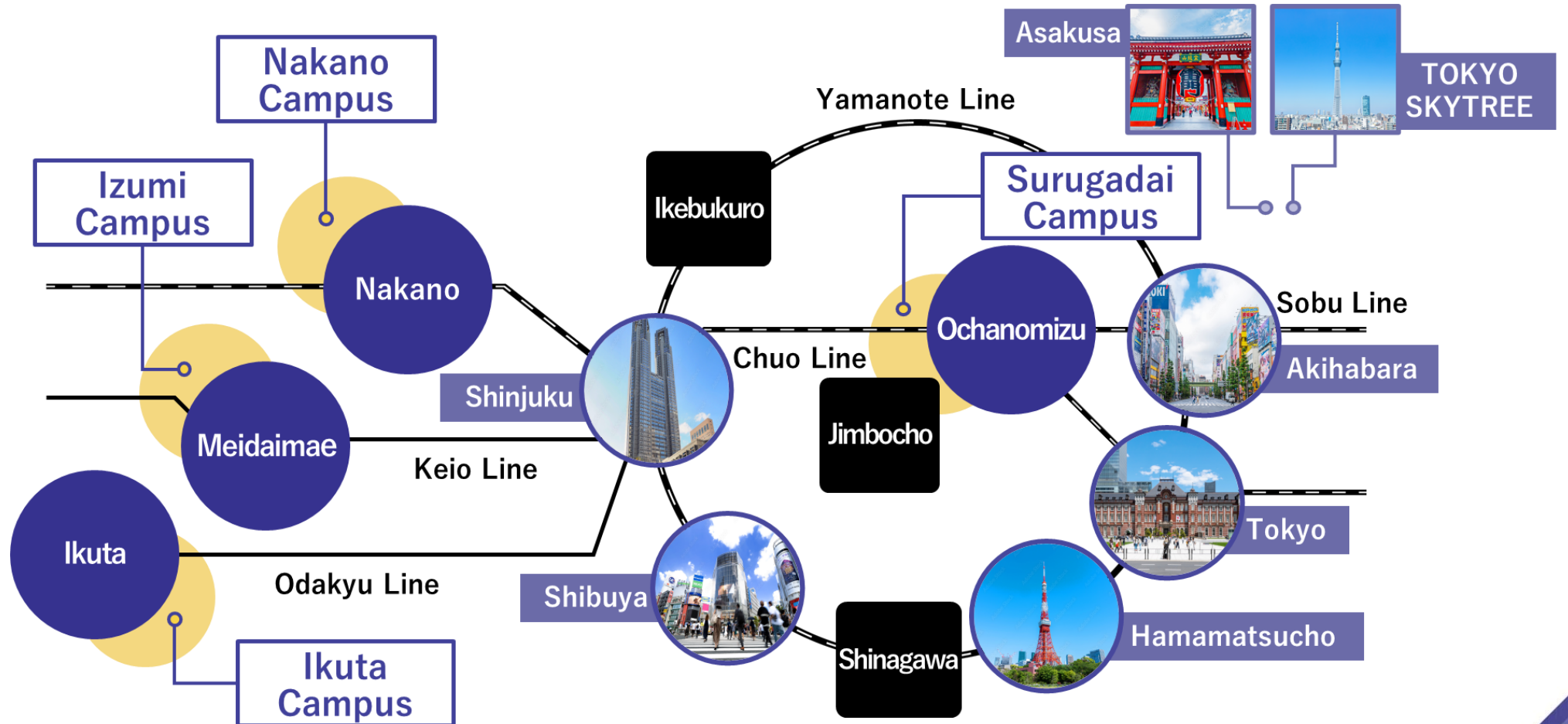


Study in Tokyo

IKUTA CAMPUS and KUROKAWA FARM

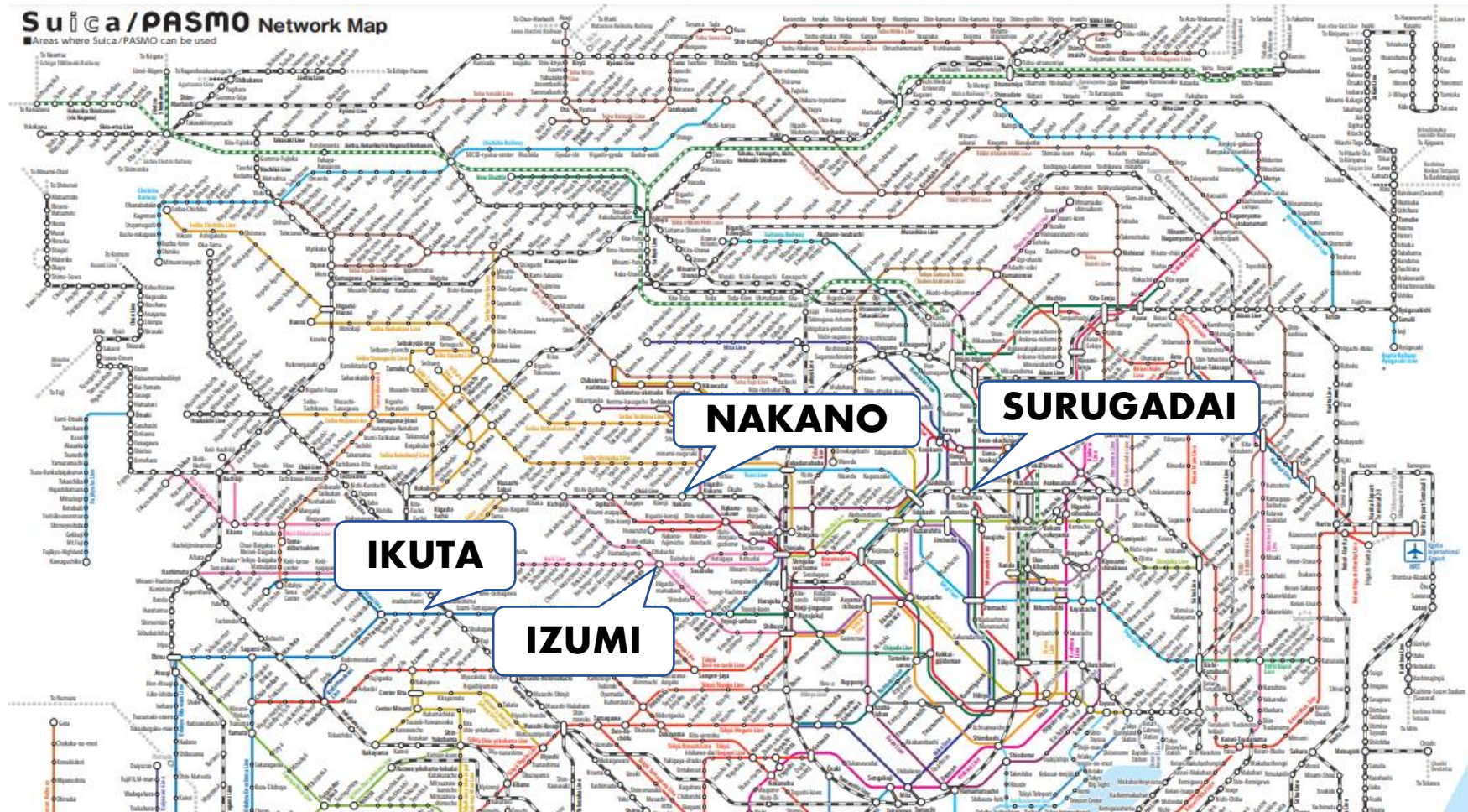


CAMPUS LOCATION



Study in Tokyo

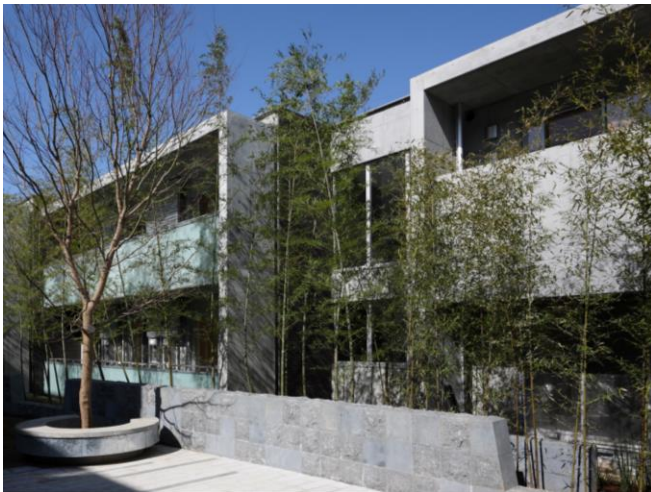
TRAIN MAP in TOKYO



JR East, Major railway and Subway Route Map : Metropolitan Area
https://www.jreast.co.jp/e/routemaps/pdf/RouteMap_majorrailsub.pdf

Dormitories(as an example)

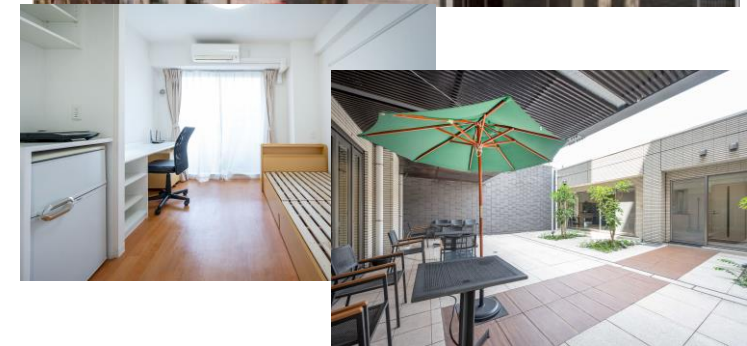
Izumi International House



Meiji Global Village



Komae International House



❖The details of our dormitories are subject to be changed.

Study in Tokyo

Student Support by Meiji Students



Monthly Cost of Living in Tokyo

Rent 🏠	370 USD ~ 600 USD
Transportation 🚆	70 USD ~ 140 USD
Meals 🍴	270 USD or more
Utilities 🔥💧	100 USD
Phone 📱	35 USD
TOTAL 🇯🇵	About 800 USD ~ 1,100 USD

※1 USD=148 JPY

The background features a collage of university-related images. On the left, there's a vertical strip showing a laboratory with equipment, a professor in a suit pointing at a chalkboard with Japanese text, and students in lab coats. On the right, another vertical strip shows students in a classroom, a student writing on a wall, and a student working at a desk. The central area is a light gray band containing the page number and title.

03

Available Schools

SCHOOLS in Japanese

Undergraduate School	Japanese Language Proficiency Test
School of Law	Level N3 or higher
School of Commerce	Level N3 or higher
School of Political Science and Economics	Level N3 or higher
School of Arts and Letters Japanese Literature, Literary Arts and Media	Level N2 or higher
School of Arts and Letters British and American Literature, Drama and Theatre Arts, Japanese History, Western History, Archaeology, Clinical Psychology, Contemporary Sociology, Philosophy	Level N3 or higher
School of Arts and Letters German Literature, French Literature, Asian History, Geography	Level N4 or higher
School of Science and Technology	Level N4 or higher
School of Agriculture	Level N3 or higher
School of Business Administration	Level N4 or higher
School of Information and Communication	Level N4 or higher
School of Global Japanese Studies (other than those applying to the English track)	Level N2 or higher
School of Interdisciplinary Mathematical Sciences	Level N4 or higher

Graduate School	Japanese Language Proficiency Test (Those who have passed a level other than N1 must have done so on a test taken in either the 2022 or 2023 academic year.)
Graduate School of Law	Level N3 or higher
Graduate School of Commerce	Level N2 or higher
Graduate School of Political Science and Economics	Level N4 or higher
Graduate School of Business Administration	Level N3 or higher
Graduate School of Arts and Letters Japanese Literature, Literary Arts and Media, Clinical Psycho-Social Sciences (Sociological Course)	Level N2 or higher
Graduate School of Arts and Letters English Literature, Drama and Theatre Arts, History (Japanese, European, Archaeology)	Level N3 or higher
Graduate School of Arts and Letters German Literature, French Literature, History(Asian), Geography	Level N4 or higher
Graduate School of Science and Technology (other than those applying to the International Program in Architecture and Urban Design)	Level N4 or higher
Graduate School of Agriculture	Level N4 or higher
Graduate School of Information and Communication	Level N2 or higher
Graduate School of Humanities	Level N2 or higher
Graduate School of Advanced Mathematical Sciences	Level N4 or higher
Graduate School of Global Japanese Studies Japanese linguistics and Japanese language education	N1
Graduate School of Global Japanese Studies Pop Culture, Japanese Social and Industrial Systems, Interculturalism and Intercultural Education, English language education, Culture and Thought	Level N2 or higher
Graduate School of Global Business	N1

Please note that Level N1 may be required in Culture and Thought program depending on supervisors.

SCHOOLS in English

Undergraduate School	TOEFL® iBT	TOEIC®	IELTS (Academic)	Cambridge ESOL	TOEFL® PBT	CEFR
School of Political Science and Economics (only taking classes conducted in English)	71 or higher	710 or higher	5.5 or higher	FCE or higher	550 or higher	
School of Arts and Letters (only taking classes conducted in English and Japanese Language Classes)	61 or higher	600 or higher	4.5 or higher		500 or higher	B1 or higher
School of Business Administration (only taking classes conducted in English)	80 or higher		6.0 or higher			
School of Global Japanese Studies (English Track) If an applicant has any issues and questions about the submission of English language proficiency documents, please inquire the International Student Office before the application period.	80 or higher		6.0 or higher	Overall Score 169 or higher		B2 or higher

Graduate School	TOEFL® iBT	TOEIC®	IELTS (Academic)	Cambridge ESOL	TOEFL® PBT	Other Application Requirements
Graduate School of Governance Studies (English Track)	76 or higher	710 or higher	5.5 or higher	FCE or higher		Refer to #1 (page 8)
Graduate School of Science and Technology, International Program in Architecture and Urban Design	76 or higher	710 or higher	5.5 or higher	FCE or higher		Refer to #2 (page 8)
Graduate School of Business Administration (only taking classes conducted in English)	71 or higher	710 or higher	5.5 or higher	FCE or higher		
Graduate School of Global Business (only taking classes conducted in English)	76 or higher		5.5 or higher			Refer to #3 (page 8)
Graduate School of Global Governance (Doctor Course)	79 or higher		6.0 or higher			

SCHOOLS in English

SURUGADAI

**Undergraduate
School of Political
Science and Economics**

**Undergraduate
School of
Arts and Letters**

**Business
Administration**

**Graduate School of
Governance Studies**

**Graduate School of
Global Business**

**Graduate School of
Global Governance**

NAKANO

**Undergraduate
School of Global
Japanese Studies**

**Graduate School of
Science and
Technology
(I-AUD only)**



- Available Schools

UGS: Political Science and Economics

Classes conducted in English

**Japanese
Political Culture**

TOP School Seminar

**Japanese
Political History**

**Special Studies
in Political Science**

**Analysis of
Media and Public**

**Special Studies
in Economics**

※The details of the above classes are subject to change.

UGS: Arts and Letters

**Classes conducted
in both English and Japanese**

**History of
British Literature**

Cultural Anthropology

**Introduction to
British & American
Literature**

Global Classroom

**Cross-Cultural
Understanding**
(British & American Literature)

Japanese Centuries



✂The details of the above classes are subject to change.

- Available Schools

UGS: Business Administration

Classes conducted in English

**International
Management**

Strategic Marketing

Global Issues

**Innovation Strategy
in Japan**

Contents Business

Japanese Economy

※The details of the above classes are subject to change.

- Available Schools

UGS: Global Japanese Studies

Classes conducted in English

Manga Culture

Media Arts

Japanese Religion

**Asia-Pacific
Political Economy**

Tourism Management

Comparative Culture



✂The details of the above classes are subject to change.

- Available Schools

GS: Science and Technology(I-AUD)

Classes conducted in English

Advanced
Urban Design

Advanced
Sustainable Design

Advanced
Design Studio

Advanced
Project Management

Advanced
Architectural Design

Architecture and Urban
Design Studies



※The details of the above classes are subject to change.

- Available Schools

GS: Business Administration

Classes conducted in English

**Business Management
and Organization**

Strategic Management

E Commerce

International Marketing

**The Future of
E Business**

**Organizational
Psychology**

✂The details of the above classes are subject to change.

- Available Schools

GS: Governance Studies

Classes conducted in English

**Political Economy of
Development**

**Environmental
Assessment**

Governance Studies

**Terrorism and
Political Violence**

**Public Financial
Management**

Econometrics

✂The details of the above classes are subject to change.

GS: Global Business

Classes conducted in English

Fundamentals of Finance

**Global Business
Studies**

Business Communication

Family Business

**Innovation and New
Business Creation**

**Competitive Strategy in
the Digital Economy**

✂The details of the above classes are subject to change.

• Available Schools

Japanese Language Classes

UGS: Global Japanese Studies

【Campus】 Nakano

【Level & Classes】

● Introduction, Elementary,
Pre-Inter. & Intermediate :

- General (3 classes/week)
- Vocabulary & Kanji [On demand]

● Upper-intermediate
& Pre-advanced :

- General (3 classes/week)
- Vocabulary & Kanji [On demand]
- JLPT Preparation (1 class/week)

● Advanced :

- Reading • Listening
- Writing • Speaking (1 class/week)

● Upper-Advanced :

- Writing • Speaking (1 class/week)

【Allocation】

On the basis of the placement test

Other Schools

【Campus】 Surugadai

【Level & Classes】

● Level 1~3 (Elementary):

- Comprehensive (4 classes/week)

● Level 4~6 (Intermediate):

- Comprehensive (3 classes/week)
- Each Skill (1 class/week)

● Level 7~8 (Advanced):

- Comprehensive (1 class/week)
- Each Skill (1 class/week)

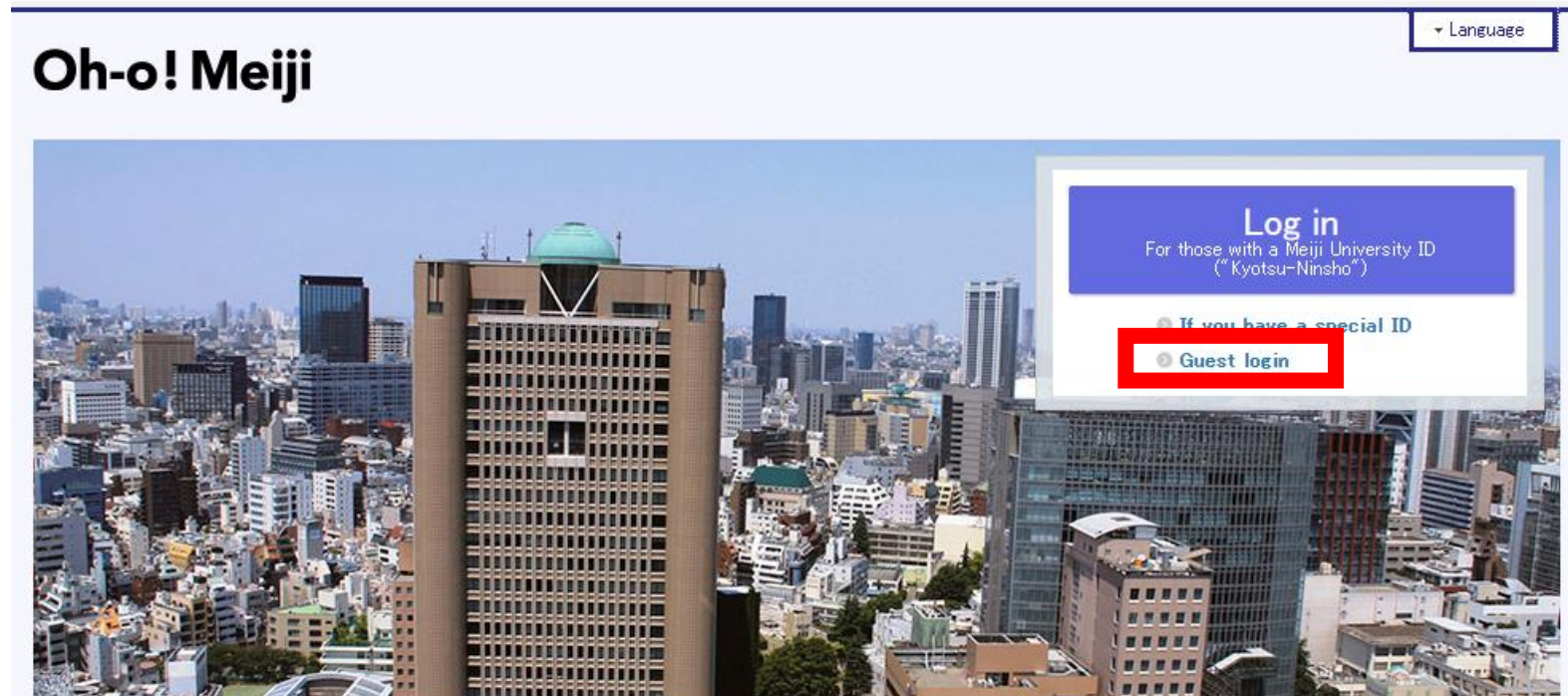
【Allocation】

On the basis of the placement test

- Available Schools

FYI: Find the syllabus

STEP 1 : Access oh-o!Meiji and log in as a guest.



<https://oh-o2.meiji.ac.jp/portal/index/en>

- Available Schools

FYI: Find the syllabus

STEP 2 : Select “Search” from the menu window.

The screenshot shows the Oh-o! Meiji portal homepage. At the top, there is a navigation bar with links for User Manuals, Contact us, Help, Language, Individual Settings, and Log Out. Below this, the main navigation bar includes HOME, ClassWeb, Search (highlighted with a red box), Group, Portfolio, and Global. The user is logged in as ゲスト さん.

The main content area is divided into several sections:

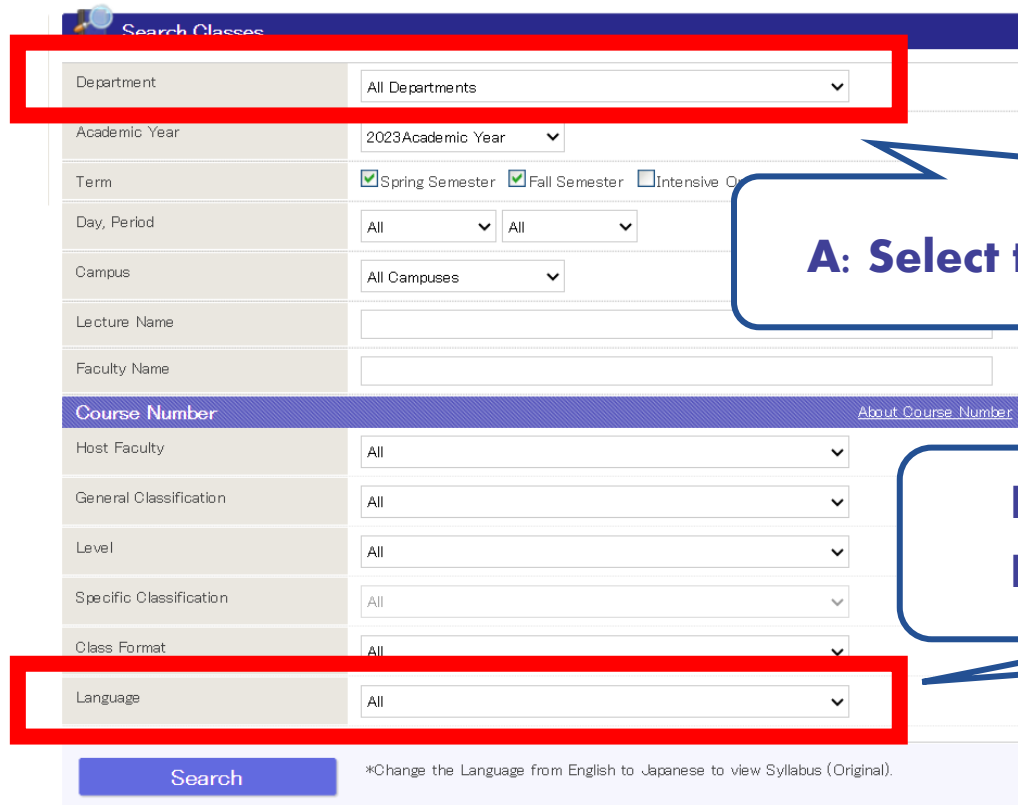
- Calendar:** A calendar for November 2023, with the 24th highlighted.
- Notifications for you/Notifications from your department:** A list of notifications, including "ゼミレポート集の返却について" and "明治太郎先生より".
- Notifications concerning your classes:** A list of notifications, including "Cancel/Extra Class", "Classroom/Timetable", "Classweb", and "Group".
- Other notifications from the University:** A list of notifications, including "情報を読む力、学問する心【明治大学図書館共催講座】", "「辞めても幸せ」一運が尽きた後の50人の生き方ー", and "幕末・明治の人間模様と時代考証".
- Meiji Mail:** A section for email notifications, including "About Meiji Mail".
- Noteworthy Contents:** A section for important content, including "成績通知表" and "健康診断結果".
- RSS Reader:** A section for RSS feeds, including "明治大学-ニュース".

At the bottom, there is a footer with the text "© Meiji University, All rights reserved."

• Available Schools

FYI: Find the syllabus

STEP 3 : Choose or Fill in your preference and select “Search.”



Search Classes

Department: All Departments

Academic Year: 2023 Academic Year

Term: ☒ Spring Semester ☒ Fall Semester ☐ Intensive O

Day, Period: All All

Campus: All Campuses

Lecture Name:

Faculty Name:

Course Number [About Course Number](#)

Host Faculty: All

General Classification: All

Level: All

Specific Classification: All

Class Format: All

Language: All

Search *Change the Language from English to Japanese to view Syllabus (Original).

A: Select the host School you wish to apply for.

**B: If you wish to take classes conducted in English,
Please select “English” in the section of Language.**

- Available Schools

FYI: Class and Credit system

1 class is 100 min, and have 14 weeks of classes

⇒ Contact hours are; $100 \text{ (min)} \times 14 \text{ (times)} = \underline{1400 \text{ (min)}}$

2 credits per class in general (1 credit or 3 credits)

Course Type	Class hours※	Self-study Hours	Total
Lecture or Seminar	15 hours	30 hours	45 hours
Laboratory, Skills Training, Foreign language study, Sports	30 hours	15 hours	

- **A 45-minute class is converted to 1 class hour.**
- For lecture courses given two credits,
1350 minutes of instruction is converted to 30 class hours.

- Available Schools

FYI: Performance Evaluation and Grade Points

Performance evaluation	Grade	Points	Achievement level (level of attainment of targets deemed necessary for mastery of the course material)	GP
Passed	S	100 to 90	Performed extremely well	4
	A	89 to 80	Performed well	3
	B	79 to 70	Performed satisfactorily	2
	C	69 to 60	Achieved the minimum targets, but performed unsatisfactorily in some respects	1
Failed	F	59 points or less	Did not achieve minimum targets	0
	T	Did not take exam	Absent from exam, etc.	

The background features a collage of four images related to university life, framed by blue geometric shapes with white dots. The top-left image shows laboratory equipment. The middle-left image shows a professor in a suit pointing at a chalkboard with Japanese text. The bottom-left image shows a student in a lab coat working. The right side features two images: a student in a red backpack sitting at a desk, and a student painting graffiti on a wall.

04

Application Procedure

Application Schedule for SPRING 2025

Online Application

**Submission of
Application materials
and COE application**

Acceptance Decision

**Middle of August 2024
~
Late September 2024**

**Middle of August 2024
~
Early October 2024**

Late January 2025

**Before the online application,
please read the application
guidelines carefully.**

**Please confirm that your
passport is valid for your
entire period of study in
Japan.**

**Your Letter of Acceptance
and COE will be delivered to
your home university.**

**We look forward to
welcoming you at MEIJI!**



Useful Links

~General Information~

<https://www.meiji.ac.jp/cip/english/admissions/exchange.html>

~VIDEOS& Brochures~

<https://www.meiji.ac.jp/cip/english/purpose/future.html>

~Oh-o! Meiji Portal~

<https://oh-o2.meiji.ac.jp/portal/index/en>

~Application Guidelines for 2024 Fall~

<https://www.meiji.ac.jp/cip/english/admissions/co7mm90000000461-att/co7mm900000004d1.pdf>