

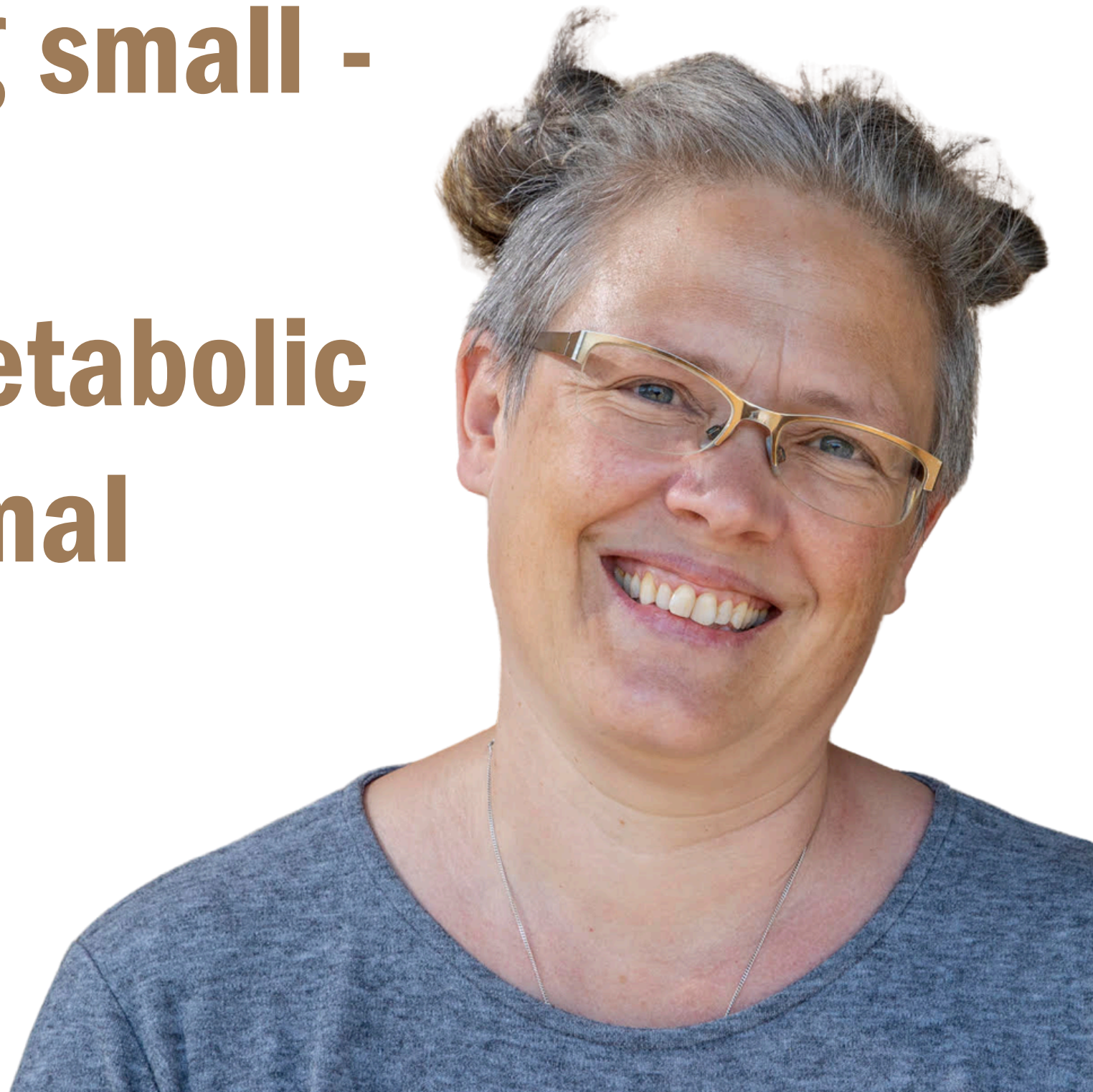


PARIS
LODRON
UNIVERSITÄT
SALZBURG

Lecture Series Environment & Biodiversity
**The challenge of being small -
alternative wintering
strategies in a high-metabolic
non-hibernating mammal**

PD Dina Dechmann
Max-Planck-Institut für
Verhaltensbiologie

Host: Dr. Sophie von Merten

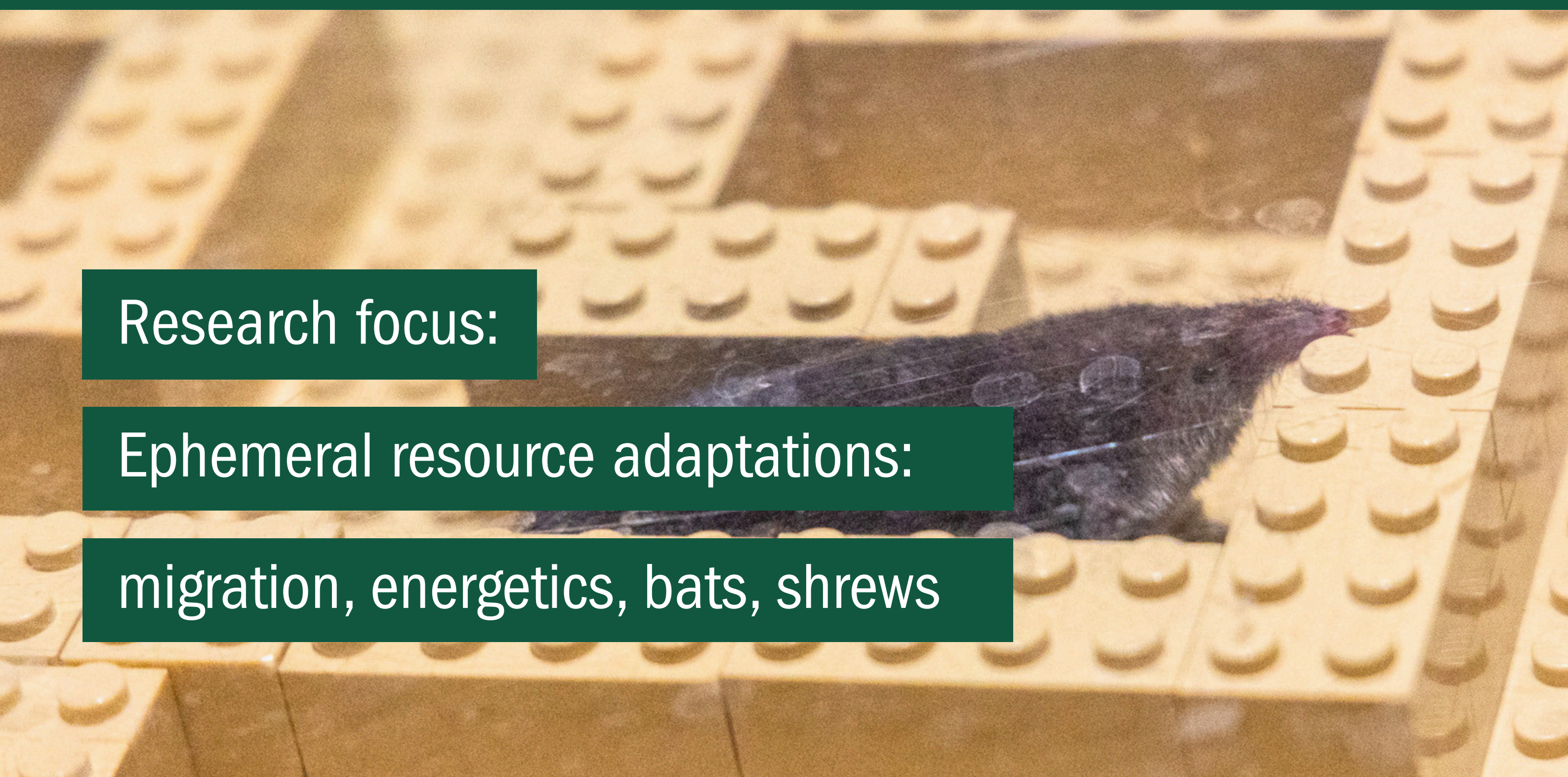


Friday, April 24, 2026, 2:00 P.M.
NLW-Faculty, Room 421, 2nd floor

Research focus:

Ephemeral resource adaptations:

migration, energetics, bats, shrews





Abstract

What do you do as a mammal if you cannot hibernate or migrate? For a few small mammals the answer is: you shrink. I'll give an overview of more than a decade of research on the causes and consequences of Dehnel's phenomenon. What happens during seasonal shrinking and regrowth of individual common shrews do? How do they better survive the winter, what are the consequences of a size changing brain and what can we learn from them that might help us?

About the speaker

If I had to categorize myself I would call myself a classical behavioral ecologist with a passion for evolution. My emerging focus is increasingly on the role that resource distribution in time and space plays for animals. What are the strategies animals use in terms of their behavior, morphology, and physiology to deal with daily, seasonal, or even rare bottlenecks in resource availability?

